

Advanced vision. Endless options.

The new ZEISS Progressive Superb with variable corridor length to fit any frame.



See more. Live more.
ZEISS precision lenses.

www.better-vision.zeiss.com



The new ZEISS Progressive Superb: Enhanced vision meets endless frame options.

Small, large, slim, rimless, full rim, nylon – no matter what kind of frame it is, the advanced FrameFit® technology by ZEISS provides every consumer with uncompromising opportunities: a variable corridor length in the lens for the perfect combination of frame, lens and prescription for enhanced clear and sharp vision.

Conventional progressives limit wearers to two basic corridor lengths: standard and short. These two design types are unable to provide optimal vision in all sizes of frame. The ZEISS Progressive Superb overcomes these limitations. It is the first ZEISS standard freeform progressive lens with FrameFit® option. This option allows you to adapt the corridor length to the needs of each consumer.

The result:
wide, balanced fields of vision, customized for each specific fitting height. Your consumer always enjoys great range of vision.

ZEISS Progressive Superb at a glance:

- Advanced FrameFit® technology by ZEISS to create a variable corridor length.
- Perfect combination of frame, lens and prescription.
- ZEISS variable thinning prism optimization algorithms and OPTIMA for enhanced cosmetic outcome.
- Optimized C.O.R.E. technology allows increased consideration of the eye's center of rotation for each individual wearer.
- Easy ordering process.
- Available with i.Scription® technology.

Consumer benefits:

- Free frame choice.
- Balanced fields of vision.
- Improved binocular vision.
- Easy adaptation.
- Thinner & flatter lenses for enhanced cosmetic outcome.
- Improved night and low light vision (if i.Scription® technology is added).

Practice benefits:

- Well-known FrameFit® options.
- More options for more satisfied consumers.
- Easy to handle and fit.
- High adaptation rates.

No more frame compromises - with ZEISS Progressive Superb.

The new ZEISS Progressive Superb perfectly fits: into each chosen frame & in the ZEISS progressive portfolio.

ZEISS progressive lens portfolio	ZEISS Progressive Classic ★★	ZEISS Progressive Plus 2 ★★★	ZEISS Progressive Superb ★★★★	ZEISS Progressive Individual 2 ★★★★★
Optimum visual performance Consideration of all relevant individual data.				●
Perfect fit into the chosen frame Adaptation of the variable corridor length.			●	●
Better spatial perception and contrast vision Binocular balance of progressive zones.		●	●	●
Thin & lightweight lenses ZEISS variable thinning optimization algorithms.*		●	●	●
High visual performance Advanced freeform technology & the distinctive ZEISS Design DNA.	●	●	●	●
Better night vision Available with i.Scription® technology.	●	●	●	●

* Due to the variable thinning prism a subsequent order for a single progressive lens is only possible if the data of the partner lens is specified and has not changed. Please find more information in the ZEISS Progressive Guide.

Product availability	Clear/tinted	PhotoFusion®	Transitions®	Polarized
Organic 1.74	● (only clear)			
Organic 1.67	●	●	●	
Organic 1.6 (also available in Sport)	●	●	●	●
Organic 1.5 (also available in Sport)	●	●	●	●

Please find detailed information on delivery ranges in your ZEISS price list.

Choose how to order.

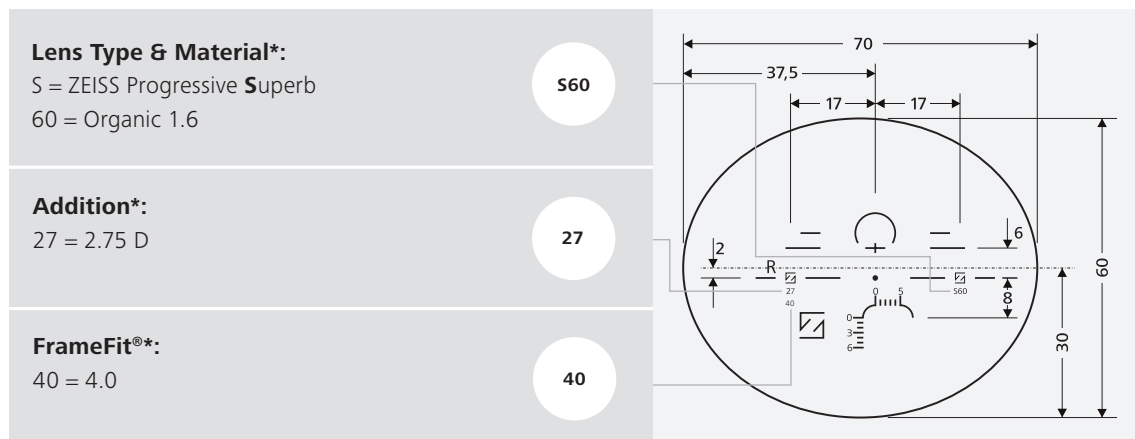
Ordering ZEISS Progressive Superb the fast and easy way with default FrameFit® values – or very detailed with specified FrameFit® values and exact fitting heights. The choice is yours!

ZEISS Progressive Superb order options.

Ordering	Without FrameFit® Without fitting height	With FrameFit® Without fitting height	Without FrameFit® With fitting height	With FrameFit® With fitting height		
	▼	▼	▼	▼		
Delivery	FrameFit® 4.0 is delivered.	Ordered FrameFit® is delivered.	The ordered fitting height is delivered with corresponding FrameFit® (between 0.0-4.0).	ZEISS internal plausibility check before delivery.		
			▼	▼		
Details			Fitting height	Produced FrameFit®	Fitting height	Max. FrameFit®
			14.0	0.0	14.0	0.0
			14.1	0.1	14.1	0.1
		
			≥ 18.0	4.0	18.0	4.0
				
				19.9	5.9	
				20.0	6.0	

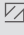
This FrameFit® value can be determined using the appropriate diameter chart – or even more precisely with ZEISS i.Terminal 2® centering system.

The ZEISS Progressive Superb stamp layout and engraving.



* Shown values are only example.

ZEISS precision lenses have a long tradition.

Improved vision means precise vision. Something which the name ZEISS has stood for over 160 years. ZEISS guarantees the ultimate in lens precision in every finished lens with an engraved , which doesn't impair your field of vision in any way. This symbol of quality proves that your individual lens contains the same competence that has turned Carl Zeiss into a pioneer in several fields of optics.

This is why astronauts relied on ZEISS quality to take pictures of the first moon landing.

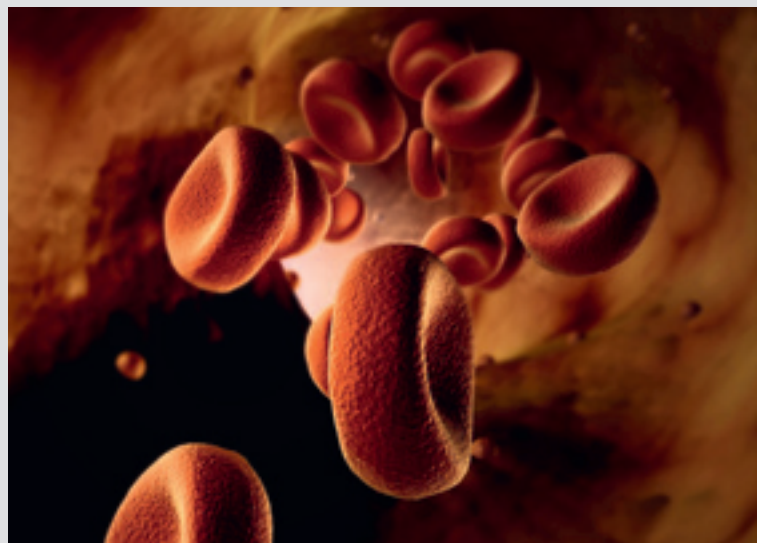
Google Earth sees more with ZEISS precision lenses. The cameras on board of practically all planes that capture images for Google Earth are equipped with ZEISS lenses.

Nobel Prize winners discover more with ZEISS microscopes. They make the invisible visible and help people become pioneers.

Hollywood captures more with ZEISS camera lenses. Whenever directors and camera crews shoot beautiful, unforgettable films, ZEISS camera lenses are often involved – from *The Lord of the Rings* to *Perfume: The Story of a Murderer*.

Precision since 1846:

- The first man on the moon – photographed on 20 July 1969 using ZEISS camera lenses.
- Google Earth uses ZEISS precision camera lenses on board practically all planes to obtain spectacular images of the earth.
- ZEISS microscopes help Nobel Prize winners make red blood cells visible.
- ZEISS camera lenses play an important role for directors and camera crews in Hollywood.





Carl Zeiss Vision International GmbH
www.zeiss.com
www.vision.zeiss.com